



Nevada Department of Wildlife

Lake Mead Sportfish

C.R.A.B.
January 11-12, 2012
Laughlin, NV

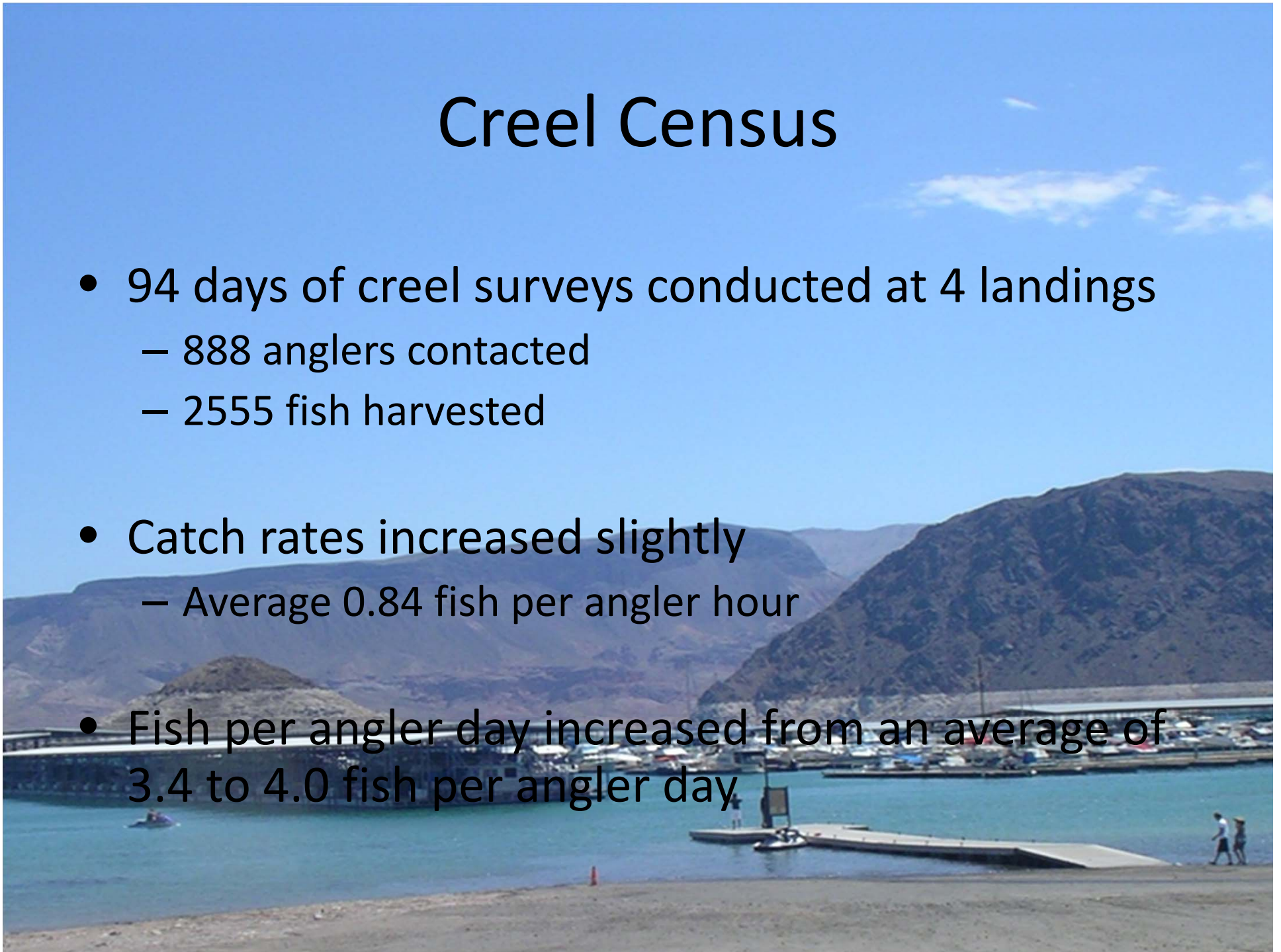
2011

A year in lake elevation increases

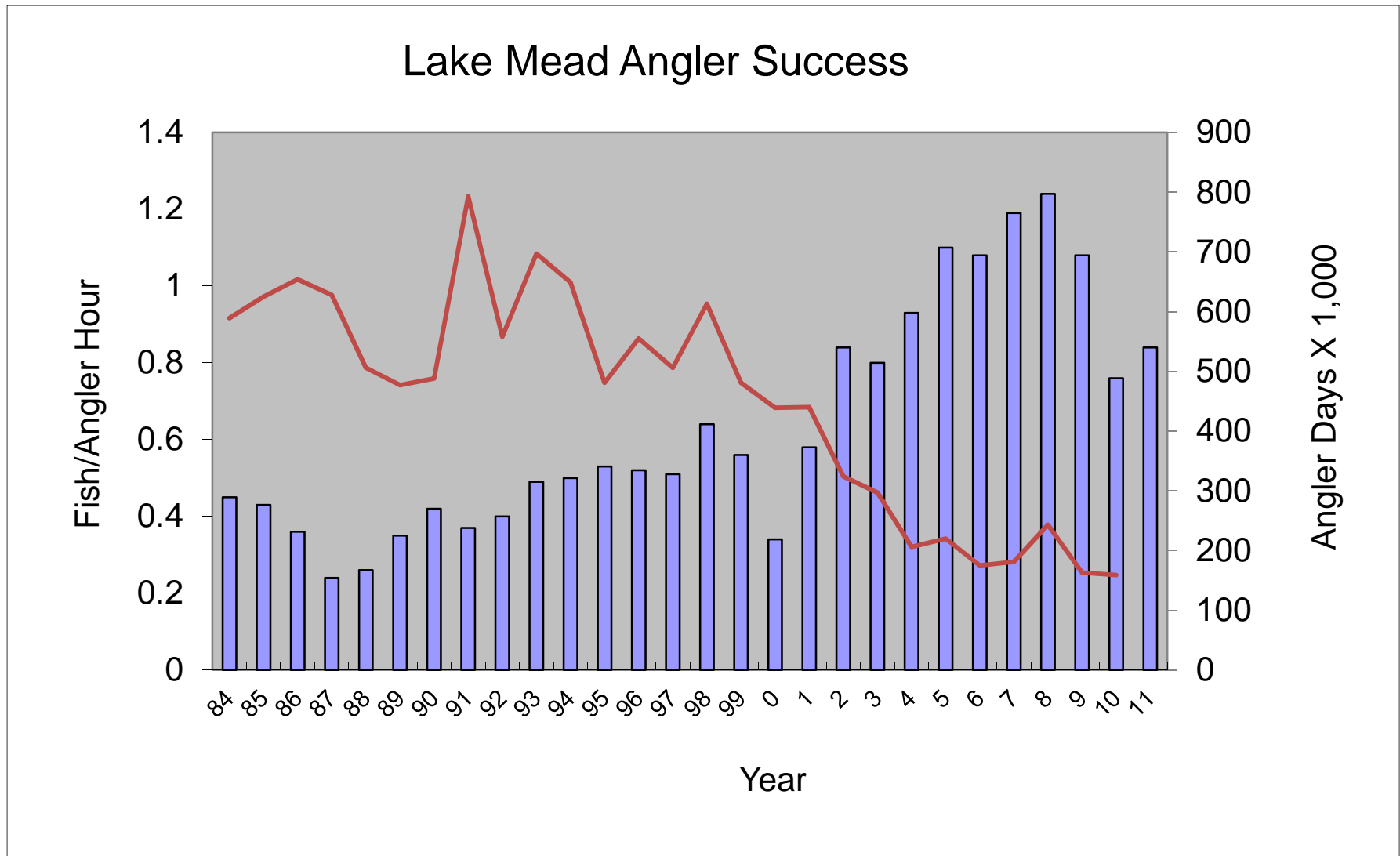


Creel Census

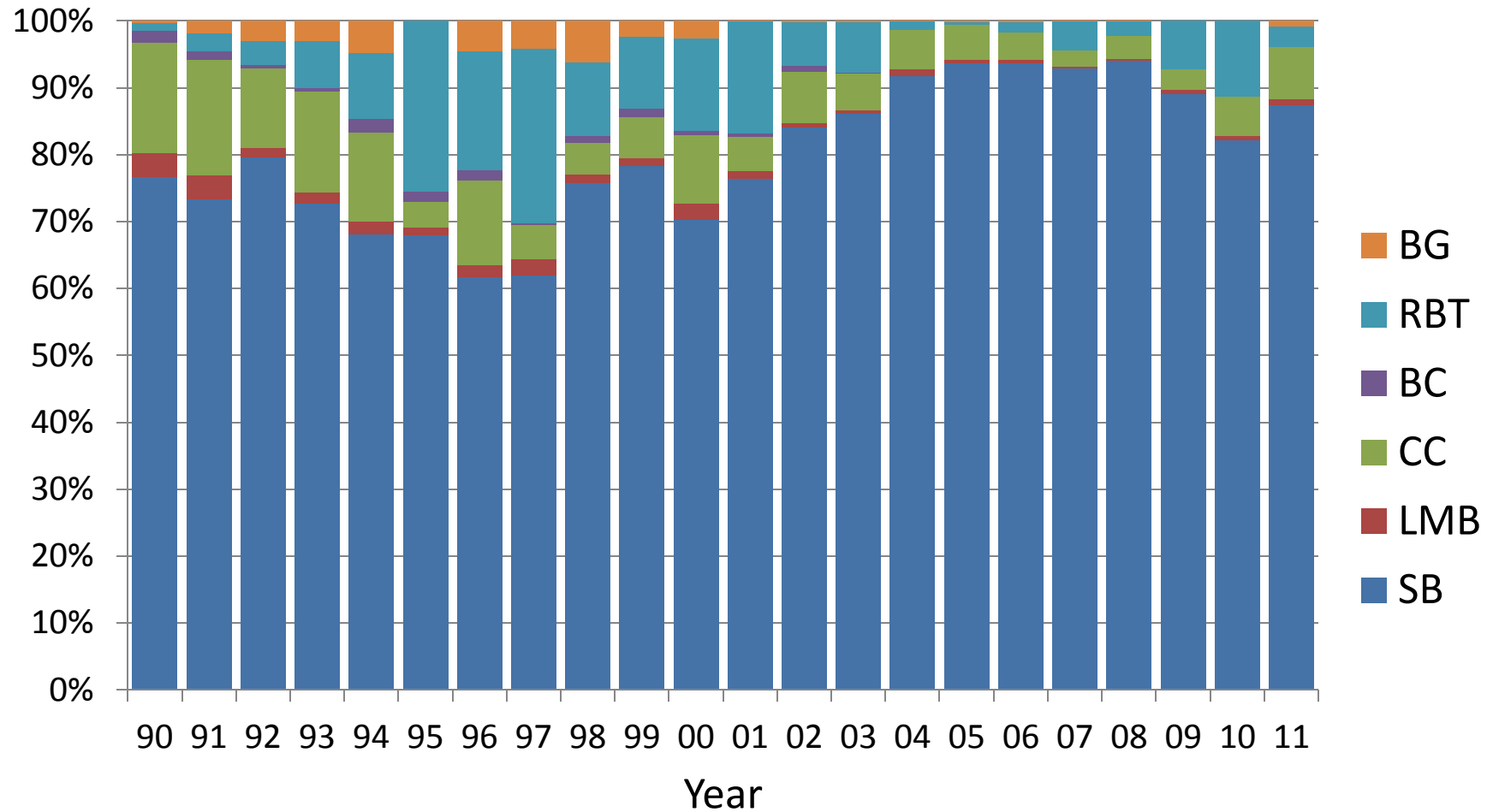
- 94 days of creel surveys conducted at 4 landings
 - 888 anglers contacted
 - 2555 fish harvested
- Catch rates increased slightly
 - Average 0.84 fish per angler hour
- Fish per angler day increased from an average of 3.4 to 4.0 fish per angler day



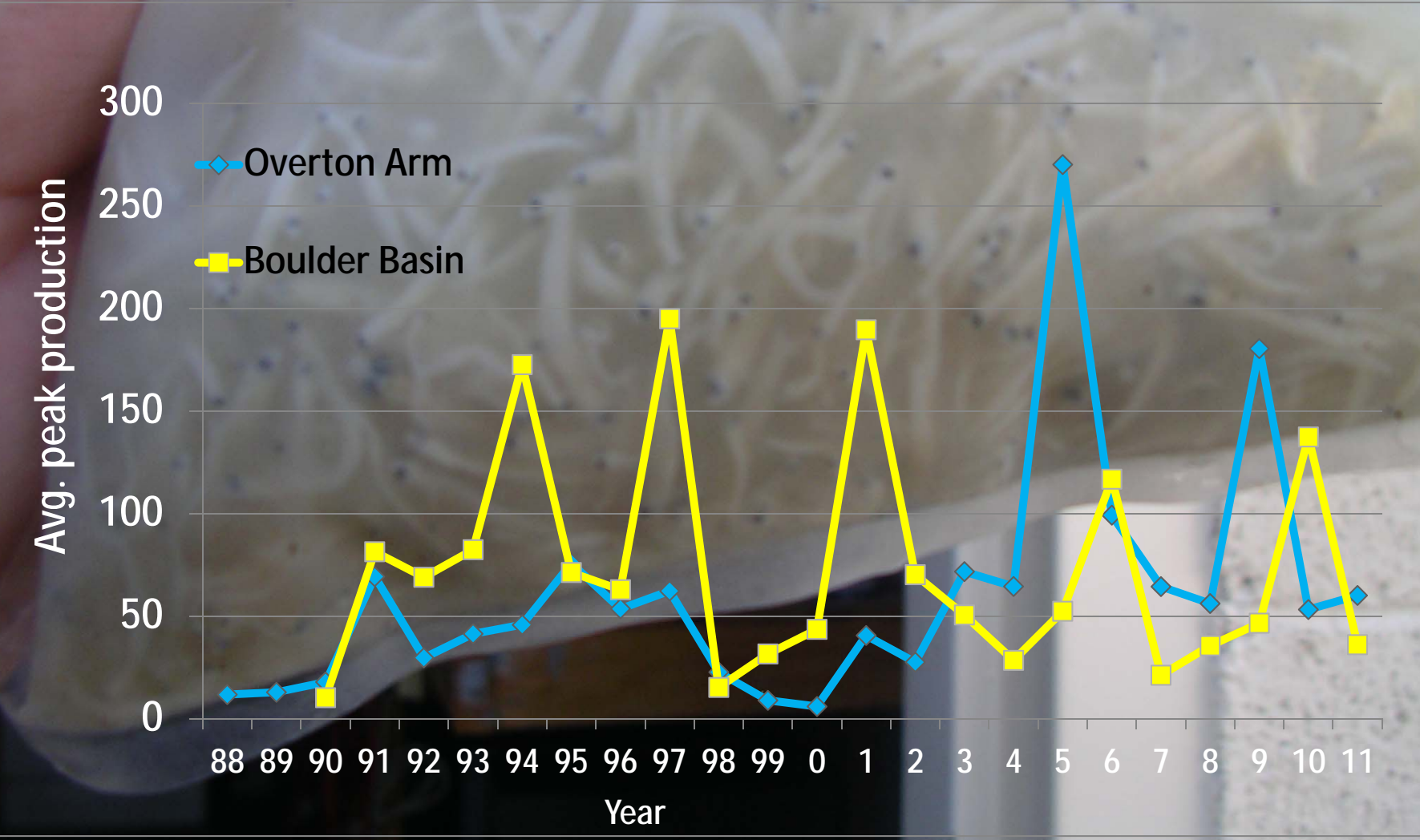
Angler catch rates vs. Angler Days



Creel harvest Species percentage

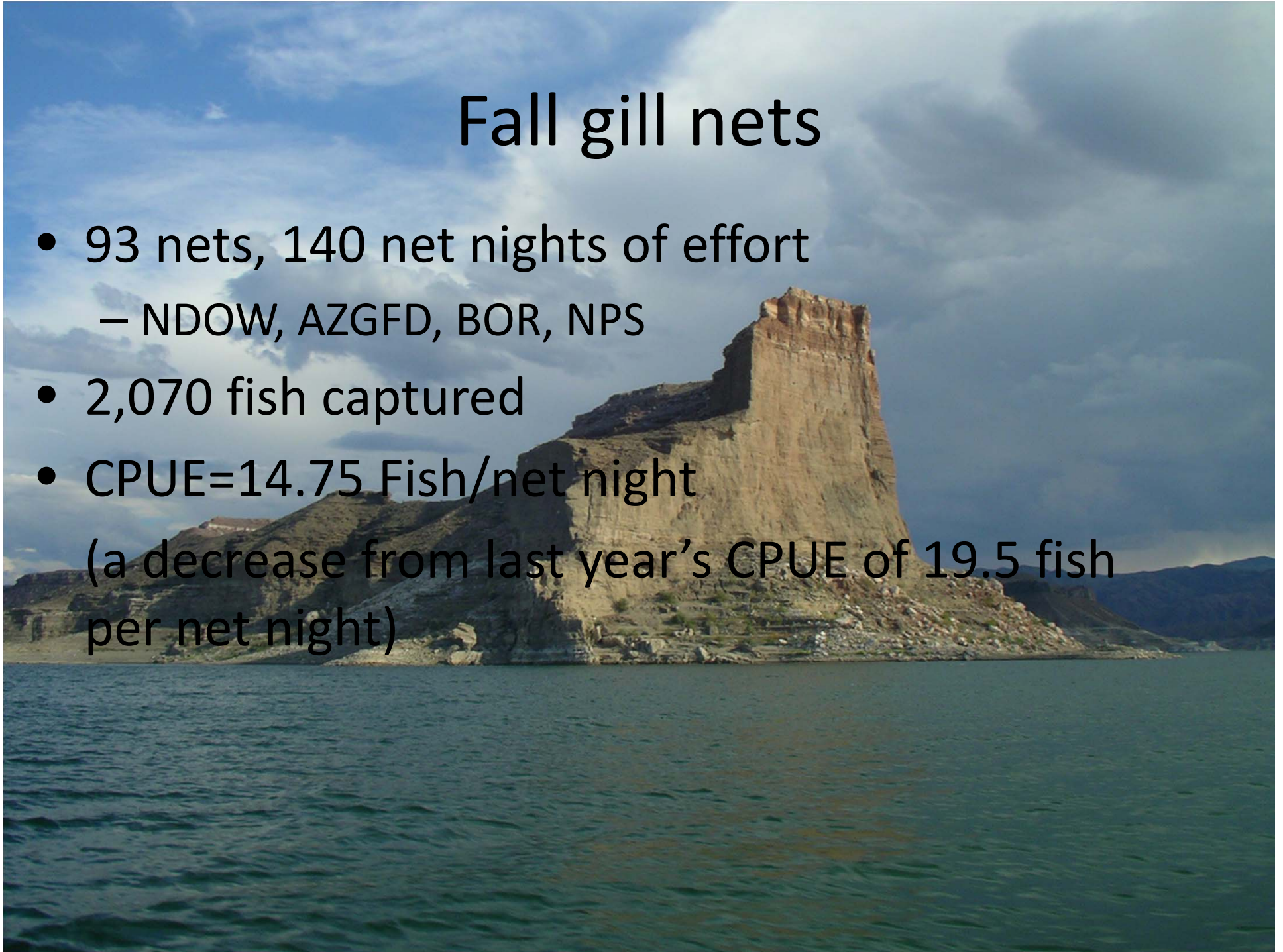


Shad production by year

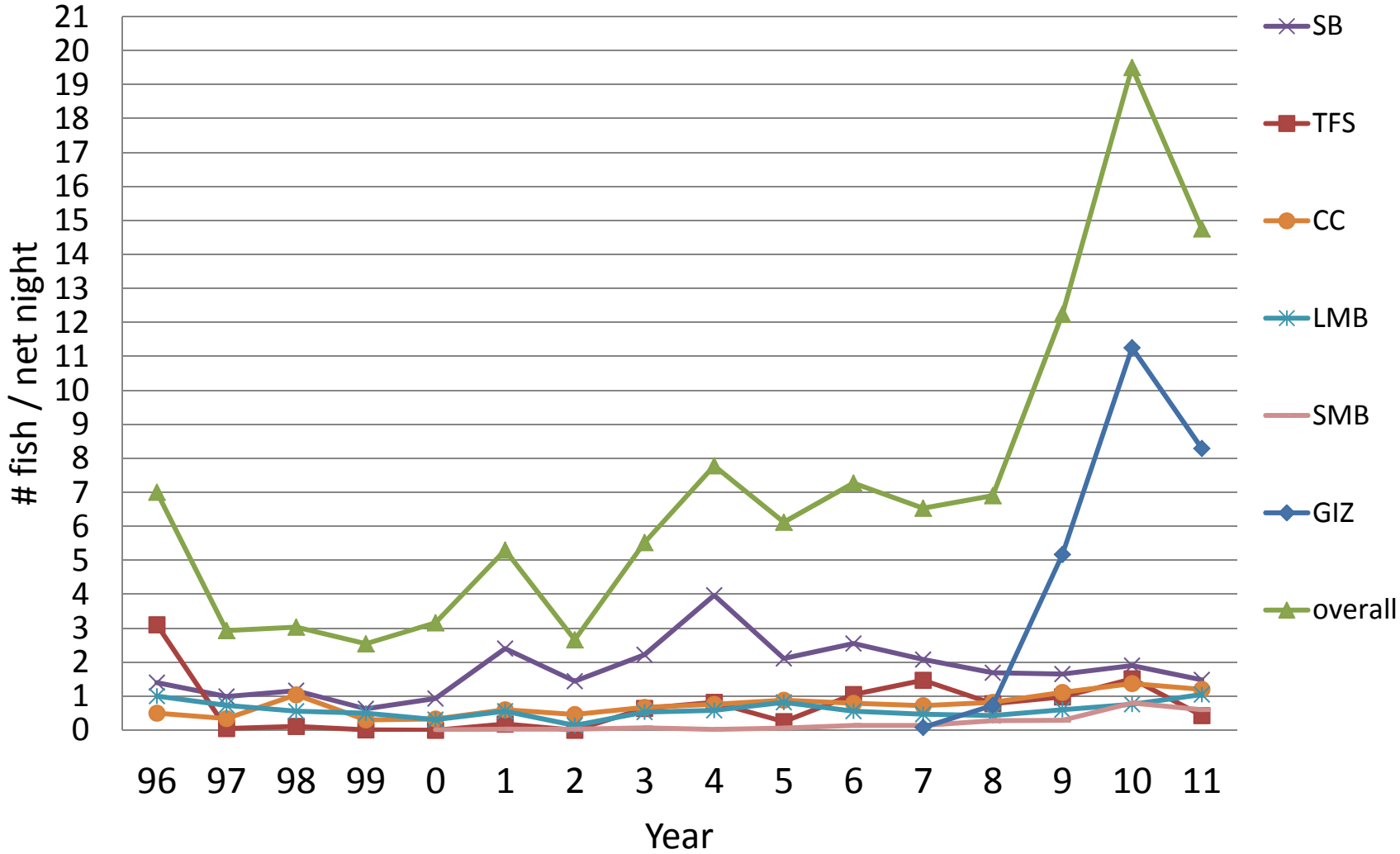


Fall gill nets

- 93 nets, 140 net nights of effort
 - NDOW, AZGFD, BOR, NPS
- 2,070 fish captured
- CPUE=14.75 Fish/net night
(a decrease from last year's CPUE of 19.5 fish per net night)



Gill net CPUE



Gill net CPUE

