

Lake Mead Zooplankton Selenium Bioassessment Study

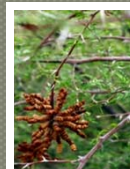


January 11-12, 2012

Las Vegas Wash
Coordination
Committee



www.lvwash.org



Acknowledgements

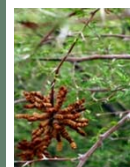
- US Bureau of Reclamation
- City of Las Vegas
- Nevada Dept of Wildlife
- Bio-West, Inc.



Las Vegas Wash
Coordination
Committee

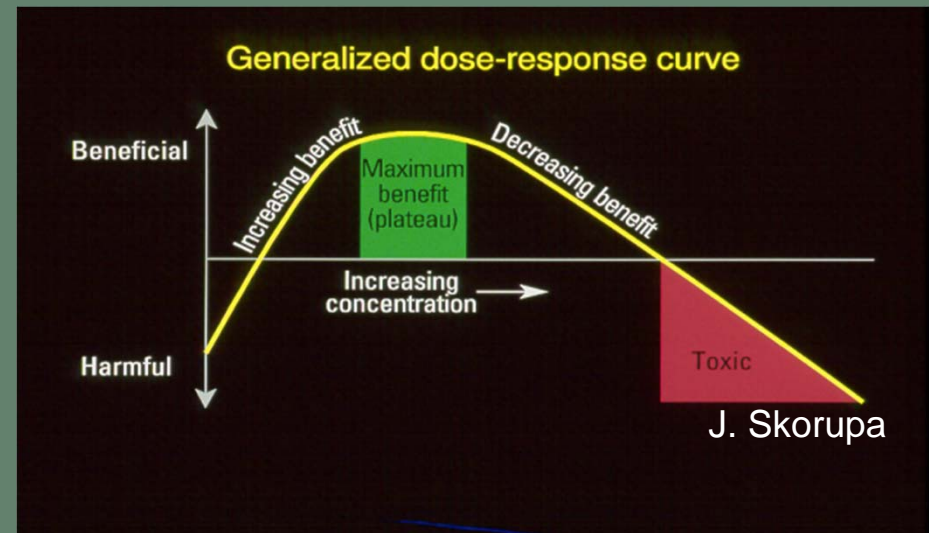


www.lvwash.org

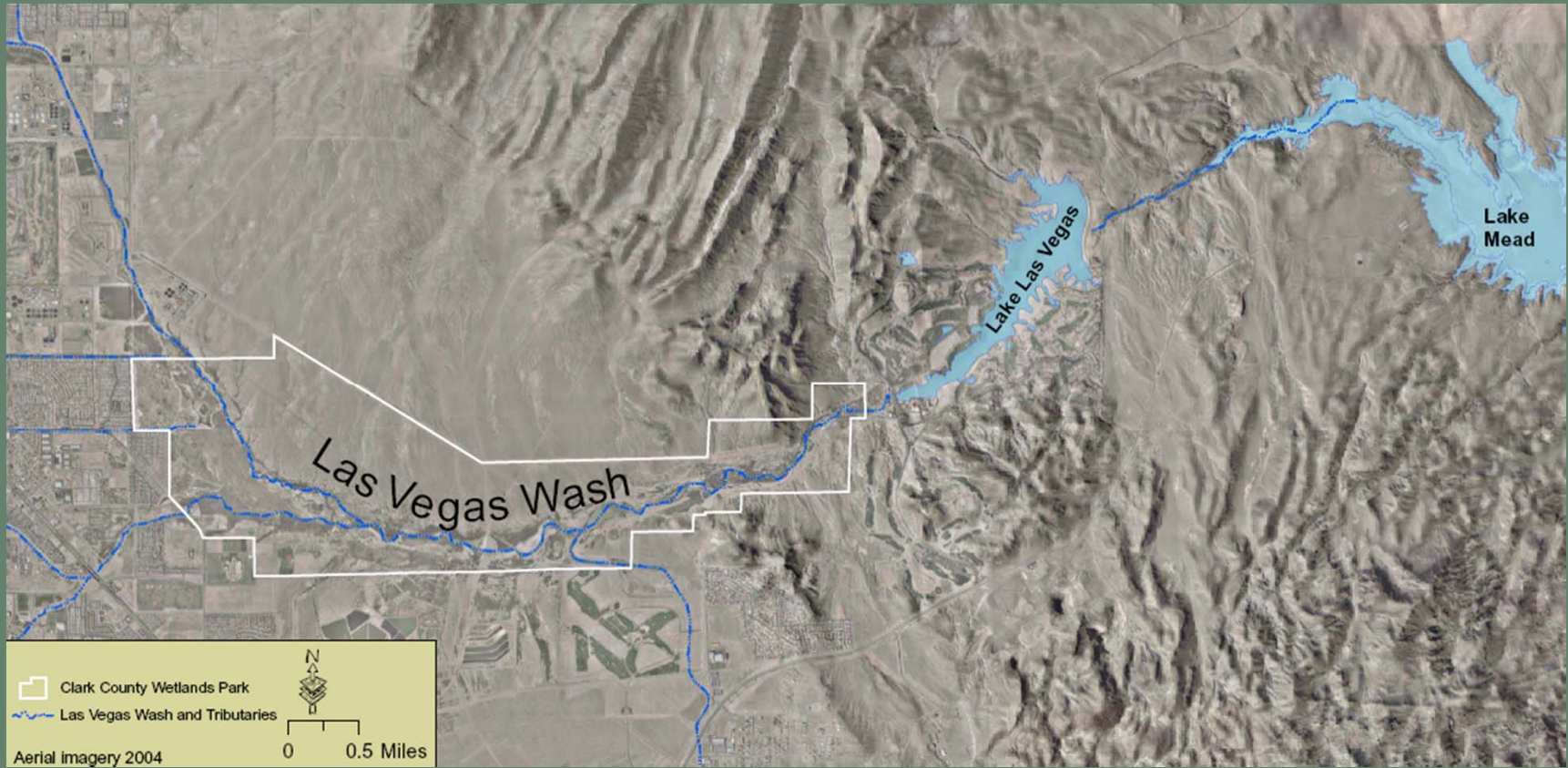


Background-Selenium

- Inorganic that occurs naturally in soil
- Leaches easily
- Is essential for bodily function in small quantities
- Toxic effects in larger quantities



Las Vegas Wash Watershed



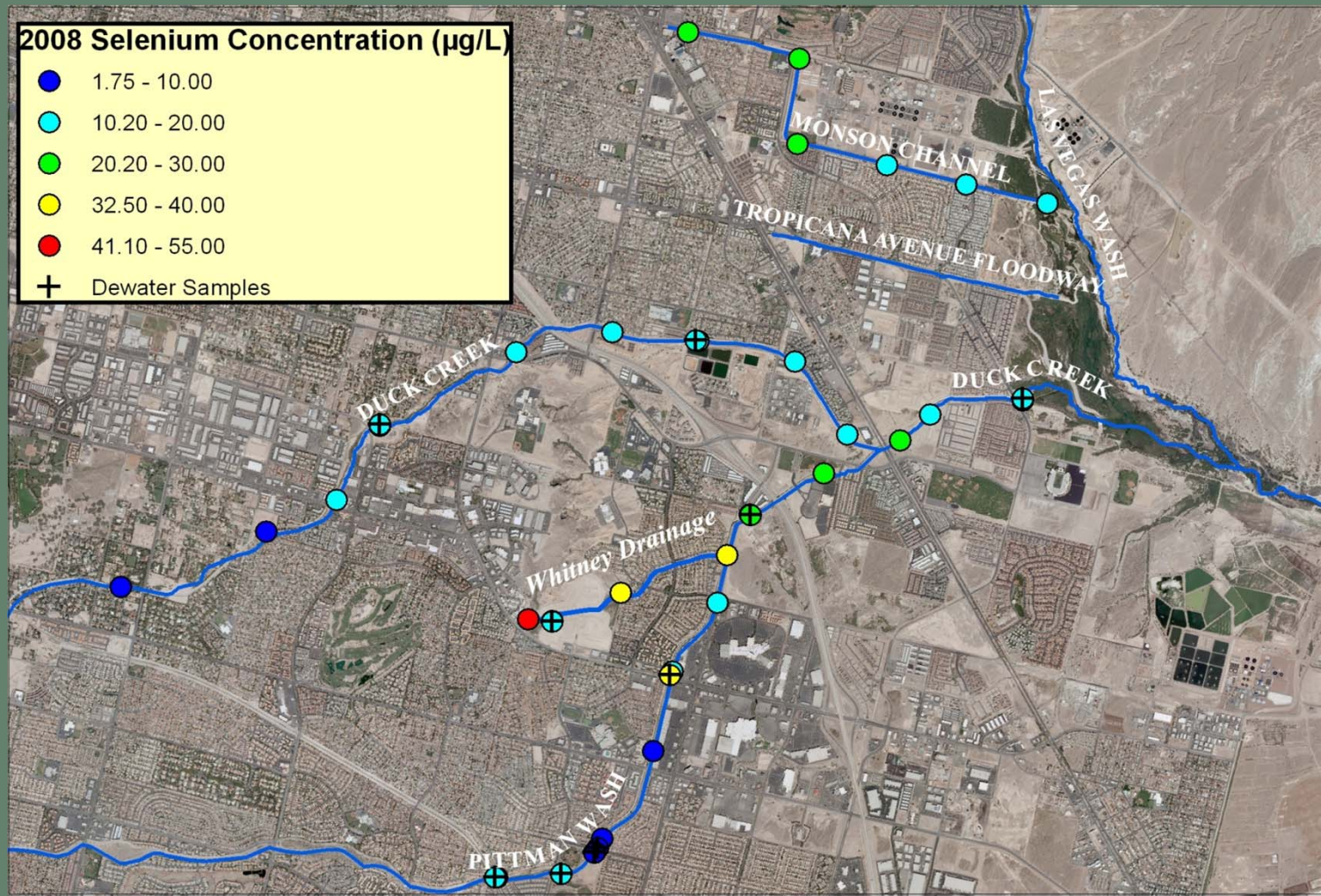
Las Vegas Wash
Coordination
Committee



www.lvwash.org



Background-2003-2009 Se Source Study



January 2008 Selenium Sample Locations

Las Vegas Wash
Coordination
Committee



www.lvwash.org

0 0.3 0.6 1.2 1.8 2.4 Miles



Bioassessment Fish Tissue Study

- Fish Collected in: 2003, 2005, 2007, 2010
- Three locations
- EPA chronic criterion value: $7.91 \mu\text{g/g}$

